



# THE BUFFS AND THE WEATHER



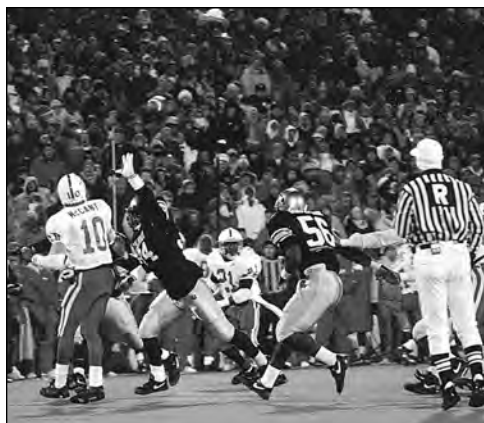
Colorado's wacky weather, for the most part, has not played too much havoc with the Buffaloes through the years. Here are the last times the elements affected games in Boulder.

**Snow:** There has seldom been snowfall during a game in Boulder. In fact, only six times since 1949 has any real snowfall of note occurred during a game. It last happened on Nov. 11, 2000, when it snowed the entire game in a 35-27 loss to Iowa State. It marked the first time snow had fallen during a game in Boulder since 1996 (light snowfall throughout the first half in a 12-0 win over Kansas State on Nov. 16, and just the second time since 1991, when it started snowing lightly late in a 30-24 win over Kansas, also on Nov. 16. There was light snowfall in a 21-6 win over Kansas State in 1979, but nothing major. In 1971, about two feet of snow fell the morning of a 56-13 win over Wyoming; what made that day unique is that it was Sept. 18, and was CU's first home game on artificial turf. The two most famous snow games came in 1969 (a 30-7 win over Indiana where it snowed all game, and in 1949, when it was sunny at kickoff prior to a 14-7 win over Utah. But the clouds rolled in and by halftime, there were snow flurries. By game's end, there was six inches of snow on the ground. There have been major snowstorms on Fridays but the weather cleared prior to game time (in 1986 before Kansas, in 1987 and 1991 before Nebraska, and in 1992 and 1994 before Iowa State).

**Rainfall:** Rain during a game in Boulder is about as rare as snowfall; light rain or annoying drizzle have happened on occasion. Light rain fell sporadically during the second half of the Texas Tech game on Oct. 14, 2006. The last time there was heavy rain during a game in Boulder was in the fourth quarter in a 20-13 loss to Michigan in 1996; otherwise you have to go back to Sept. 11, 1982, in a 31-17 loss to California (Bill McCartney's first game). The last road games with rain were both in 2013 at Oregon State and at Washington.



'82 CU-California



'91 CU-Nebraska

**Bitter Cold:** There have been only five occasions where the temperature was below 20 degrees at kickoff at Folsom Field in its history. The last time was the Iowa State game in 2000 mentioned under "snow" above. On Nov. 16, 1996, it was 16 degrees at the start of both halves in a 12-0 win over Kansas State, and the mercury reached 12 degrees with a wind-chill of minus-8 in a 19-19 tie against Nebraska on Nov. 2, 1991.

**Wind:** Despite the Midwest and Boulder being known to experience high winds on occasion, only four times since 1985 have winds really affected a CU game. The last time was on Nov. 12, 2011, when winds gusted from 32 to 62 miles per hour in CU's 48-29 win over Arizona; the time before that was on Nov. 11, 1995, when winds gusting from 30 to 67 mph were prevalent during most of Colorado's 21-0 victory over Missouri (winds gusted from 18-35 mph in the first half of the Sept. 18, 2018 West Virginia game but subsided for the second half). On the road, the Great Plains winds were quite common, especially later in the fall; on Nov. 12, 2005, a tornado warning/sighting delayed the start of the CU-Iowa State game in Ames; winds would gust 20-45 mph throughout after a nearly two hour delay. On Nov. 9, 1991 in Stillwater, a 16-12 CU win became known for one of the gutsiest play calls in CU history—a fake field goal with 12 seconds left in the game that produced the winning points; the call was because of the wind, blowing upward of 30 mph at the end of the game.

## COLORADO'S WARMEST GAMES (\*—night game)

Since 1950, Colorado is 45-31 when it has been 80 degrees or warmer at kickoff.

| Date           | Opponent                | Result  | Temperature/Conditions         |
|----------------|-------------------------|---------|--------------------------------|
| Sept. 8, 2007  | *at Arizona State       | L 14-33 | 102 / clear skies              |
| Sept. 15, 2012 | *at Fresno State        | L 14-69 | 102 / clear skies              |
| Sept. 21, 2002 | at UCLA (Pasadena)      | W 31-17 | 99 / clear skies (light haze)  |
| Oct. 5, 1963   | at Kansas State         | W 21- 7 | 94 / clear & windy             |
| Sept. 1, 2012  | Colorado State (Denver) | L 17-22 | 94 / partly cloudy             |
| Sept. 24, 1949 | KANSAS                  | W 13-12 | 92 / clear skies               |
| Oct. 1, 1994   | at Texas                | W 34-31 | 91 / clear & humid             |
| Sept. 16, 2000 | WASHINGTON              | L 14-17 | 91 / hazy (forest fire nearby) |
| Aug. 26, 2001  | *FRESNO STATE           | L 22-24 | 91 / partly cloudy, breezy     |
| Sept. 28, 1940 | at Texas                | L 7-39  | 90 / clear skies               |
| Sept. 10, 1983 | at Michigan State       | L 17-23 | 90 / sunny & windy             |
| Oct. 6, 2007   | *at Baylor              | W 43-23 | 90 / cloudy skies              |
| Sept. 4, 2010  | Colorado State (Denver) | W 24- 3 | 90 / clear skies               |
| Sept. 7, 2013  | *CENTRAL ARKANSAS       | W 38-24 | 90 / partly cloudy skies       |

Note: a reminder that most seasons began in late September (or later) until 11-game seasons became the norm in 1971; thus it was naturally cooler with later start dates.

## COLORADO'S COLDEST GAMES (\*—night game)

Overall, Colorado is 17-7-1 when it has been 32 degrees or colder at kickoff.

| Date          | Opponent         | Result  | Temperature (WC)/Conditions   |
|---------------|------------------|---------|-------------------------------|
| Nov. 11, 1911 | COLORADO A&M     | W 31- 0 | 7 (-1) / snow flurries        |
| Nov. 2, 1991  | *NEBRASKA        | T 19-19 | 12 (-8) / cloudy              |
| Nov. 23, 1918 | at Denver        | L 0- 6  | 15 (15) / cloudy              |
| Nov. 16, 1996 | *KANSAS STATE    | W 12- 0 | 16 (-3) / snow flurries       |
| Nov. 23, 1991 | at Iowa State    | W 17-14 | 17 (-8) / blizzard conditions |
| Nov. 2, 1935  | COLORADO COLLEGE | W 23- 0 | 18 (14) / cloudy              |
| Nov. 14, 1959 | at Nebraska      | L 12-14 | 19 (-1) / cloudy & windy      |
| Nov. 11, 2000 | IOWA STATE       | L 27-35 | 19 ( 2) / snowfall throughout |
| Nov. 23, 1985 | KANSAS STATE     | W 30- 0 | 24 (13) / sunny & windy       |
| Nov. 23, 2007 | NEBRASKA         | W 65-51 | 24 (13) / cloudy              |
| Nov. 15, 1997 | at Kansas State  | L 20-37 | 25 ( 6) / cloudy & windy      |
| Nov. 7, 1936  | UTAH             | W 31- 7 | 27 (23) / cloudy              |
| Nov. 22, 1958 | at Utah          | W 7- 0  | 28 (11) / snowy & windy       |
| Nov. 13, 1976 | KANSAS           | W 40-17 | 28 (19) / overcast, light fog |
| Nov. 23, 2013 | *SOUTHERN CAL    | L 29-47 | 29 (29) / partly cloudy       |

Four others at 29 degrees: Mines 1919 (W), UNC 1926 (W), CC 1929 (W) & 1931 (W)